

ICONIC

CABINETS



PREMIUM QUALITY. PREMIUM CRAFTSMANSHIP.
PREMIUM CABINETS.

In a search for **premium quality & craftsmanship** look no further.

At Iconic Cabinets we produce only the finest quality, luxury garage cabinets. Using premium quality steel and aluminum materials, our line of cabinets are the perfect compliment to any garage environment. We provide the storage you need, with the visual aesthetics and quality you expect from a luxury garage cabinet company.

Our cabinets are designed and built to please even the most particular clients. Their heavy-duty steel construction allows for long-term durability, even under the toughest conditions. Attractive finishes, and an extensive lineup of accessories allows our customers and designers to customize their garage cabinets to suit their space.



Build Your Dream Garage Online: iconiccabinets.com/garage-builder

Key Features

- ◆ Precision-crafted 16 Gauge cold-rolled steel construction.
- ◆ .060" Brushed aluminum tops & bottoms on upper cabinets and closets.
- ◆ Rigid double-wall doors with full-length stainless steel piano hinge for unparalleled strength and performance.
- ◆ Drawer capacity: 250lb per drawer.
- ◆ All drawers are lockable with 1/8" rubber liners.
- ◆ Structural fasteners for maximum stability and longevity.
- ◆ 16 Gauge stainless steel counter tops wrapped around 3/4" plywood.
- ◆ 8 Textured powder coat colours to choose from.
- ◆ Cabinets ship fully assembled.



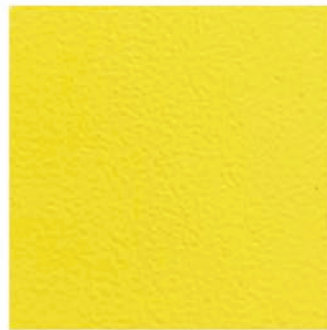
Colour Selection



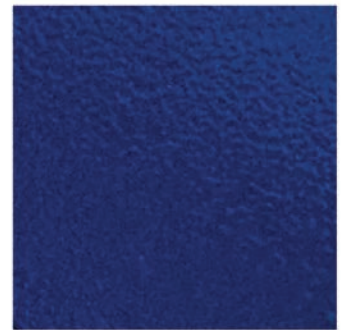
CORSA RED



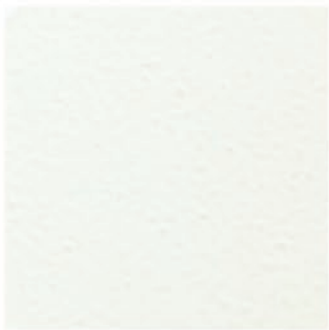
NITRO ORANGE



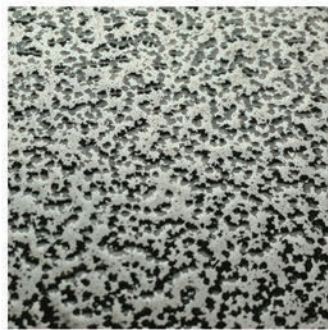
MELLOW YELLOW



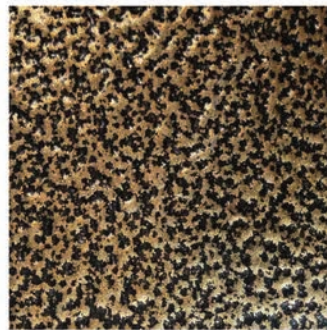
MERCURY BLUE



GHOST WHITE



HAMMERED SILVER



HAMMERED COPPER



CARBON BLACK

ICONiC

CABINETS

UPPER CABINETS





Upper Cabinet, Single Door 14 Inch Deep

RH PART #	LH PART #	WIDTH	HEIGHT	DEPTH	SHELF	LBS/KG
201	231	19"	18"	14"	X	32/14
203	233	19"	24"	14"	✓	38/17
205	235	19"	30"	14"	✓	49/22



Upper Cabinet, Single Door 24 Inch Deep

RH PART #	LH PART #	WIDTH	HEIGHT	DEPTH	SHELF	LBS/KG
202	232	19"	18"	24"	X	50/22
204	234	19"	24"	24"	✓	64/29
206	236	19"	30"	24"	✓	68/30



Upper Cabinet, Dual Door 14 Inch Deep

PART #	WIDTH	HEIGHT	DEPTH	SHELF	LBS/KG
210	28"	18"	14"	X	50/22
212	28"	24"	14"	✓	70/31
214	28"	30"	14"	✓	82/37



Upper Cabinet, Dual Door 24 Inch Deep

PART #	WIDTH	HEIGHT	DEPTH	SHELF	LBS/KG
211	28"	18"	24"	X	88/40
213	28"	24"	24"	✓	124/56
215	28"	30"	24"	✓	135/60



Upper Cabinet, Dual Door 14 Inch Deep

PART #	WIDTH	HEIGHT	DEPTH	SHELF	LBS/KG
216	34"	18"	14"	X	55/24
218	34"	24"	14"	✓	72/32
220	34"	30"	14"	✓	88/39



Upper Cabinet, Dual Door 24 Inch Deep

PART #	WIDTH	HEIGHT	DEPTH	SHELF	LBS/KG
217	34"	18"	24"	X	92/41
219	34"	24"	24"	✓	127/57
221	34"	30"	24"	✓	155/70



Upper Cabinet, Dual Door 14 Inch Deep

PART #	WIDTH	HEIGHT	DEPTH	SHELF	LBS/KG
222	48"	18"	14"	X	73/33
226	48"	24"	14"	✓	91/41
227	48"	30"	14"	✓	108/48



Upper Cabinet, Dual Door 24 Inch Deep

PART #	WIDTH	HEIGHT	DEPTH	SHELF	LBS/KG
223	48"	18"	24"	X	94/42
224	48"	24"	24"	✓	114/51
225	48"	30"	24"	✓	133/60



Upper Cabinet, Three Door 14 Inch Deep

PART #	WIDTH	HEIGHT	DEPTH	SHELF	LBS/KG
228	51"	18"	14"	X	80/36
229	51"	24"	14"	✓	101/45
230	51"	30"	14"	✓	121/54



Corner Unit Cabinets

PART #	WIDTH	HEIGHT	DEPTH	SHELF	LBS/KG
207	24"	18"	24"	X	72/32
208	24"	24"	24"	X	88/39
209	24"	30"	24"	X	107/48

ICONiC

CABINETS

LOWER CABINETS





Lower Cabinet, Dual Door

RH PART #	LH PART #	WIDTH	HEIGHT	DEPTH	LBS/KG
101*	105*	19"	30"	24"	72/32
102	N/A	28"	30"	24"	120/54
103	N/A	34"	30"	24"	125/56

Includes 1 adjustable shelf. Base channel & countertop sold separately.
*Single door configuration.



Lower Cabinet, 1x5.5" Drawer

RH PART #	LH PART #	WIDTH	HEIGHT	DEPTH	LBS/KG
401*	415*	19"	30"	24"	120/54
404	N/A	28"	30"	24"	150/68
407	N/A	34"	30"	24"	160/72

Drawer liners and 1 adjustable shelf included. Base channel & countertop sold separately.
*Single door configuration.



Lower Cabinet, 2x2.5" Drawer

RH PART #	LH PART #	WIDTH	HEIGHT	DEPTH	LBS/KG
402*	416*	19"	30"	24"	130/58
405	N/A	28"	30"	24"	160/72
408	N/A	34"	30"	24"	165/74

Drawer liners and 1 adjustable shelf included. Base channel & countertop sold separately.
*Single door configuration.



Lower Cabinet, 6-Drawer Toolchest

PART #	WIDTH	HEIGHT	DEPTH	DRAWER SIZES	LBS/KG
403	19"	30"	24"	4x2.5", 1x5.5" and 1x8"	225/102
406	28"	30"	24"	4x2.5", 1x5.5" and 1x8"	250/113
409	34"	30"	24"	4x2.5", 1x5.5" and 1x8"	260/117

Drawer liners included. Base channel & countertop sold separately.



Lower Cabinet, 9-Drawer Toolchest

PART #	WIDTH	HEIGHT	DEPTH	DRAWER SIZES	LBS/KG
410	51"	30"	24"	1x47"x5.5", 4x2.5", 2x5.5", 2x8"	333/151

Drawer liners included. Base channel & countertop sold separately.



Lower Cabinet, "Open To Floor" Unit

RH PART #	LH PART #	WIDTH	HEIGHT	DEPTH	FEATURES	LBS/KG
106	108	28"	36"	24"	Door Included	103/46
107	N/A	28"	36"	24"	No Door	93/42

Countertop sold separately.



Lower Cabinet, "Open To Floor" Corner Unit

RH PART #	LH PART #	WIDTH	HEIGHT	DEPTH	LBS/KG
110	104	28"	36"	N/A	44/19

Countertop sold separately.

ICONiC
CABINETS

ROLLING
TOOLCHESTS





Rolling Toolchest, 28 Inch Wide

PART #	WIDTH	HEIGHT	DEPTH	DRAWER SIZES	LBS/KG
411	28"	36"	24"	4x2.5", 1x5.5" and 1x8"	288/130



Rolling Toolcart, 34 Inch Wide

PART #	WIDTH	HEIGHT	DEPTH	DRAWER SIZES	LBS/KG
417	34"	36"	24"	1x2.5" and 1x5.5"	156/70



Rolling Toolchest, 34 Inch Wide

PART #	WIDTH	HEIGHT	DEPTH	DRAWER SIZES	LBS/KG
412	34"	36"	24"	4x2.5", 1x5.5" and 1x8"	316/143



Rolling Toolchest, 51 Inch Wide With Door

PART #	WIDTH	HEIGHT	DEPTH	DRAWER SIZES	LBS/KG
413	51"	42"	24"	1xDoor, 1x47"x5.5", 4x2.5", 1x5.5", 1x8"	360/163



Rolling Toolchest, 51 Inch Wide 13-Drawer

PART #	WIDTH	HEIGHT	DEPTH	DRAWER SIZES	LBS/KG
414	51"	42"	24"	1x47"x5.5", 8x2.5", 2x5.5" & 2x8"	422/191

ICONiC
CABINETS

CLOSETS





Closets, Single Door, 28 Inch Wide

RH PART #	LH PART #	WIDTH	HEIGHT	DEPTH	LBS/KG
306	307	28"	75"	14"	200/90
301	304	28"	75"	24"	250/113

Includes 2 adjustable shelves.



Closets, Single Door, 34 Inch Wide

RH PART #	LH PART #	WIDTH	HEIGHT	DEPTH	LBS/KG
308	309	34"	75"	14"	210/95
302	305	34"	75"	24"	260/117

Includes 2 adjustable shelves.



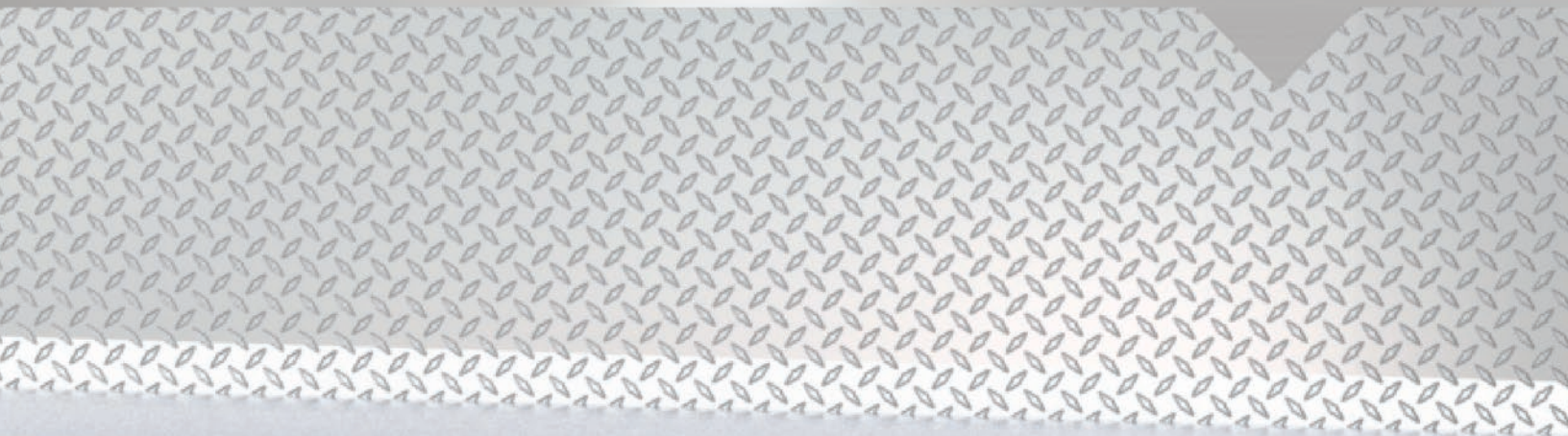
Closets, Dual Door, 48 Inch Wide

PART #	WIDTH	HEIGHT	DEPTH	LBS/KG
310	48"	75"	14"	340/154
303	48"	75"	24"	390/176

Includes 2 adjustable shelves.

ICONiC
CABINETS

**COUNTER
TOPS**





16 Ga. Stainless Steel Counter

PART #	WIDTH	FACE	DEPTH	THICKNESS	LBS/KG per ft.
501	per ft.	1"	24"	.060"	9/4

3/4" Plywood backing standard.



16 Ga. Powdercoated Steel Counter

PART #	WIDTH	FACE	DEPTH	THICKNESS	LBS/KG per ft.
724	per ft.	1"	24"	.060"	8/3

3/4" Plywood backing standard.

ICONiC

CABINETS

CABINET ACCESSORIES



Shelves, 19 Inch Wide



PART #	WIDTH	HEIGHT	DEPTH	LBS/KG
701	19"	N/A	14"	3/1
702	19"	N/A	24"	6/2

Shelves, 28 Inch Wide



PART #	WIDTH	HEIGHT	DEPTH	LBS/KG
703	28"	N/A	14"	4/1
704	28"	N/A	24"	8/3

Shelves, 34 Inch Wide



PART #	WIDTH	HEIGHT	DEPTH	LBS/KG
705	34"	N/A	14"	5/2
706	34"	N/A	24"	10/4

Shelves, 48 Inch Wide



PART #	WIDTH	HEIGHT	DEPTH	LBS/KG
707	48"	N/A	14"	6/2
708	48"	N/A	24"	12/5

Shelves, 51 Inch Wide



PART #	WIDTH	HEIGHT	DEPTH	LBS/KG
735	51"	N/A	14"	7/3



Base Channel, 19 Inch Wide

PART #	WIDTH	HEIGHT	DEPTH	LBS/KG
710	19"	6" with feet	22"	12/5
727	19"	6" with feet	12"	9/4



Base Channel, 28 Inch Wide

PART #	WIDTH	HEIGHT	DEPTH	LBS/KG
711	28"	6" with feet	22"	15/6
728	28"	6" with feet	12"	12/5



Base Channel, 34 Inch Wide

PART #	WIDTH	HEIGHT	DEPTH	LBS/KG
712	34"	6" with feet	22"	16/7
729	34"	6" with feet	12"	14/6



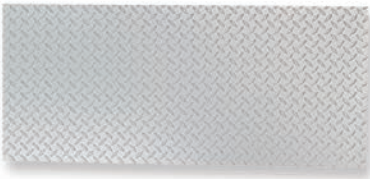
Base Channel, 48 Inch Wide

PART #	WIDTH	HEIGHT	DEPTH	LBS/KG
713	48"	6" with feet	22"	20/9
730	48"	6" with feet	12"	18/8



Base Channel, 51 Inch Wide

PART #	WIDTH	HEIGHT	DEPTH	LBS/KG
736	51"	6" with feet	22"	22/10



Back Splashes

PART #	WIDTH	HEIGHT	THICKNESS	LBS/KG per ft.
716	per ft.	24"	0.125"	5/2
725	per ft.	48"	0.125"	10/4



Kickplate Cover/Trim

PART #	WIDTH	HEIGHT	THICKNESS	LBS/KG per ft.
715	per ft.	6"	0.125"	2/1
722	per ft.	8"	0.125"	3/1



Feet and Casters

PART #	DESCRIPTION	# IN SET	LBS/KG
714	Gable Extension Legs	1	4/1
717	Castors (6" diameter)	4	36/16



Latch Selection

PART #	DESCRIPTION	LBS/KG
718	Zinc Latches (Non-Lockable)	0.5/0.2
719	Zinc Latches (Lockable)	0.5/0.2
720	Black Powdercoated Latches (Non-Lockable)	0.5/0.2
721	Black Powdercoated Latches (Lockable)	0.5/0.2

ICONiC

CABINETS

CABINET COMBINATIONS





Bronze Combination

FEATURES	OVERALL WIDTH
1x 34" 6 drawer base	68"
1x 34" 1 drawer, 2 door base	
2x 34" x 24" tall 2 door uppers	

Checkerplate aluminum backsplash, stainless steel counter, and base channel included.



Silver Combination

FEATURES	OVERALL WIDTH
1x 34" 1 drawer, 2 door base	102"
1x 34" 2 drawer, 2 door base	
2x 34" x 24" tall 2 door uppers	
1x 34" x 18" tall 2 door upper	

Checkerplate aluminum backsplash, stainless steel counter, and base channel included.



Gold Combination

FEATURES	OVERALL WIDTH
1x 34" 6 drawer base	102"
1x 34" 2 door, 1 drawer base	
2x 34" x 24" tall 2 door uppers	
1x 34" closet	

Checkerplate aluminum backsplash, stainless steel counter, and base channel included.



Platinum Combination

FEATURES	OVERALL WIDTH
1x 34" 2 door, 1 drawer base	136"
1x 34" 2 door base	
2x 34" x 24" tall 2 door uppers	
2x 34" closets	

Checkerplate aluminum backsplash, stainless steel counter, and base channel included.



Iconic Combination

FEATURES	OVERALL WIDTH
1x 34" 6 drawer base	198"
2x 34" 2 door bases	
2x 48" 2 door closets	
2x 34" x 24" tall 2 door uppers	
1x 34" x 18" tall 2 door upper	

Checkerplate aluminum backsplash, stainless steel counter, and base channel included.



Custom Combination

FEATURES
Create your own custom combination
Custom cabinet dimensions
Custom finishes
Checker backsplash
Specialty cabinets available ex. TV enclosures, fridges, sound enclosures.

Build Your Dream Garage Online: iconiccabinets.com/garage-builder

Custom design? Draw it below.

Build Your Dream Garage Online: iconiccabinets.com/garage-builder

Custom design? Draw it below.

Build Your Dream Garage Online: iconiccabinets.com/garage-builder

Custom design? Draw it below.

Build Your Dream Garage Online: iconiccabinets.com/garage-builder

ICONiC

CABINETS

1.877.890.9142
www.ICONICCABINETS.com

Build Your Dream Garage Online: iconiccabinets.com/garage-builder